

Herpes Virus Infections

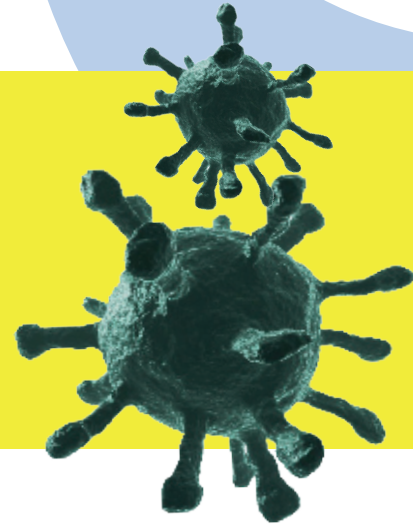


Diagnosis of Herpes Virus Infections is crucial for:

- **HIV-positive** patients
- patients after **organ transplantation**
- patients with **leucosis**
- patients with **cancer**

AmpliSens® CMV and EBV quantitative kits

- the **most effective** kits for determination of viral load
- two independent internal controls allow to quantify virus in:
 - **liquid samples**
.: calculation of virus copies per 1 ml (*sensitivity 400 copies/ml*)
 - **biopsy (solid) samples**
.: calculation of virus copies per 10⁵ cells (*sensitivity 5 copies/10⁵ cells*)



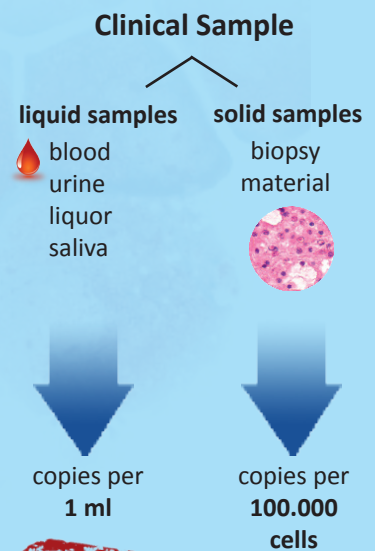
AmpliSens® Monoplex Real-Time PCR kits

		Channels	No. of Rx
R-V7-F(RG,iQ)-CE	CMV-FRT	FAM, JOE	110
R-V7-100-S(RG,iQ,Mx)-CE	CMV-screen/monitor-FRT QUANTITATIVE	FAM, JOE, ROX	110
R-V9-100-S(RG,iQ,Mx)-CE	EBV-screen/monitor-FRT QUANTITATIVE	FAM, JOE, ROX	110
R-V8-F(RG,iQ)-CE	HSV I,II-FRT	FAM, JOE	110
R-V38-F(RG,iQ)-CE	HSV-typing-FRT	FAM, JOE, ROX	110
R-V10-T(RG,iQ,Mx)-CE	HHV6-screen-titre-FRT QUANTITATIVE	FAM, JOE	110
R-V61-50-F(RG)-CE	VZV-FRT	FAM, JOE	60

AmpliSens® Multiplex Real-Time PCR kits

		Channels	No. of Rx
R-V48(RG,iQ,Mx)-CE	EBV/CMV/HHV6-screen-FRT QUANTITATIVE	FAM, JOE, ROX, Cy5	110
R-V60-F(RG,iQ)-CE	HSV/CMV-multiprime-FRT	FAM, JOE, ROX	110

CMV & EBV quantitation



One protocol for different samples!

Multiplex EBV/CMV/HHV6-screen-FRT

- the **most complex** kit for clinical sample analysis
- all pathogens are detected in **quantitative** format
- **ideal** for transplant patient screening

your distributor

